

DriverInstall Guide

Revision 00.02

Fujian Newland Payment Technology Co.,Ltd.

March, 2024

Revision Sheet

Release No.	Date	Revision Description
00.01	2020/09/18	Create document.
00.02	2024/03/22	Update adb and qucsber

Overview

Before using NPT PC tools, such as Downloader tools, AppSignature tools, Security tools, you need to install the NPT PC driver. After the driver is successfully installed, the tool can interact with the POS for usb or serial port.

TABLE OF CONTENTS

- [Terminals and operating systems](#)
 - [Terminals supported](#)
 - [Operating systems supported](#)
- [Installation steps](#)
 - [First installation](#)
 - [Re-install](#)
 - [Installation suspension](#)
- [Installation exception handling](#)
- [Common exception handling](#)
 - [Activation system](#)
 - [Enable driver forced signature](#)
 - [win7*64 System](#)
 - [Unidentified device](#)
 - [Manually update the driver](#)

Terminals and operating systems

Terminals supported

All Linux and android based products from Newland Payment.

Operating systems supported

Windows 7/8.1/10/11

Installation steps

First installation

Open the Driver Installation Directory and run DriverInstall.exe, Installation will be completed automatically. The installation process will take a few seconds, generally no more than 30 seconds.

If this driver is installed for the first time, the installation interface information is as follows

Windows 10&Windows 11:

```
OsVersion: Major 10 Minor 0 BuildNumber 22621
Installing NewLand POS unified drive, please wait a moment...
Successfully installed the usb driver.
Successfully installed the adb driver.
NewLand POS unified drive is successfully installed.
```

Other Windows systems:

```
OsVersion: Major 6 Minor 1 BuildNumber 7601
Installing NewLand POS unified drive, please wait a moment...
Successfully installed the usb driver.
Successfully installed the adb driver.
Successfully installed the qusbser driver.
NewLand POS unified drive is successfully installed.
```

Re-install

If the driver was previously installed and installed again, a message similar to the following will be displayed.

Windows 10&Windows 11:

```
OsVersion: Major 10 Minor 0 BuildNumber 22621
Installing NewLand POS unified drive, please wait a moment...
Found usb driver installed,successful update.
Successfully installed the adb driver.
NewLand POS unified drive is successfully installed.
```

Other Windows systems:

```
C:\Users\Administrator\Desktop\Usb_Driver\Usb_Driver>DriverInstall.exe
OsVersion: Major 6 Minor 1 BuildNumber 7601
Installing NewLand POS unified drive, please wait a moment...
Found usb driver installed,successful update.
Successfully installed the adb driver.
Found qusbser driver installed,successful update.
NewLand POS unified drive is successfully installed.
```

Installation suspension

If the interface is installed, the cursor does not go down after waiting for a few tens of seconds. It may be that you accidentally clicked the console with the mouse to make the console enter the "quick edit mode", which will block the program . Click the right mouse button. Or press "Enter" to cancel the mode, the installer will continue

```
Installing NewLand POS unified drive, please wait a moment...
Found usb driver installed,successful update.
```

Installation exception handling

If the installation interface has the word "Failed to.....", it will return an error code, feedback the error code to the NPT related personnel

Common exception handling

Activation system

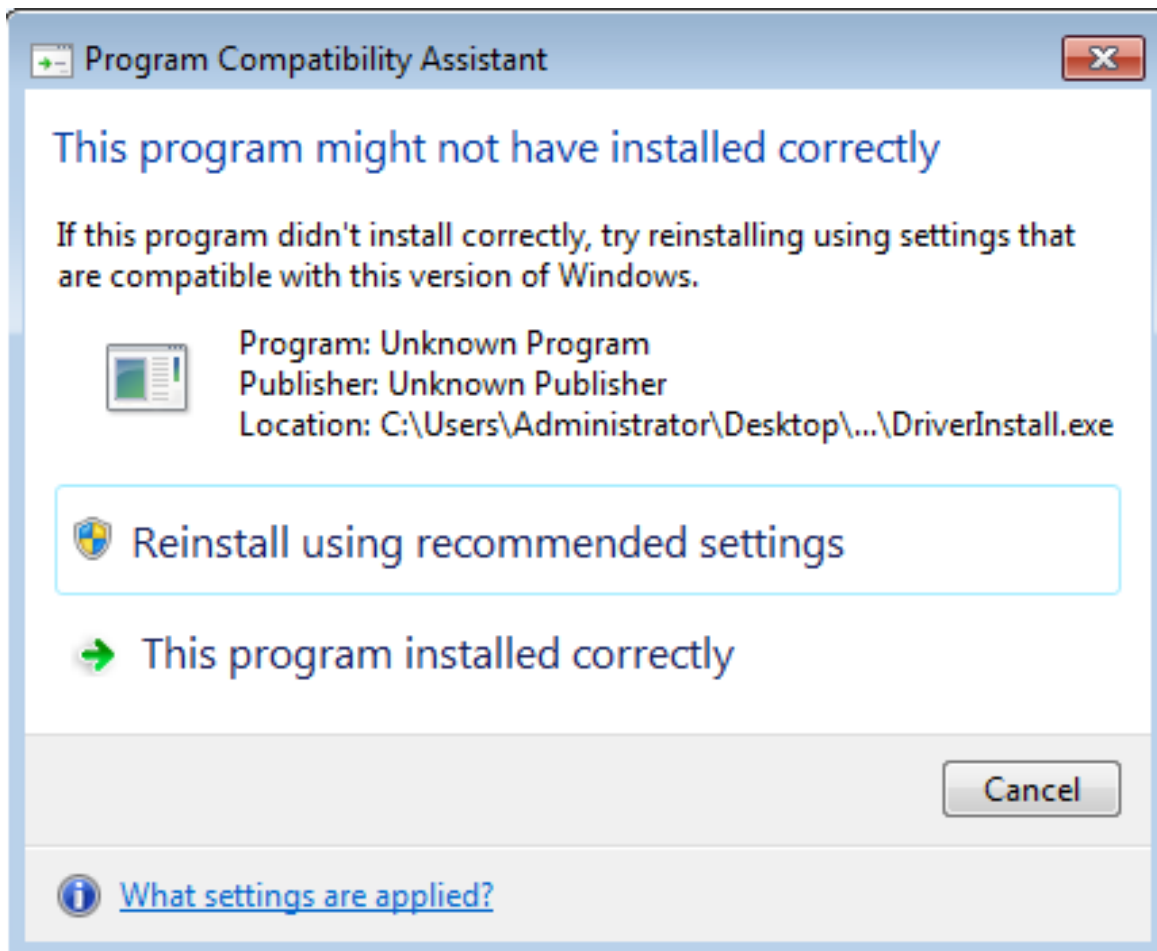
First confirm that the operating system has been activated, if not activated first.

Enable driver forced signature

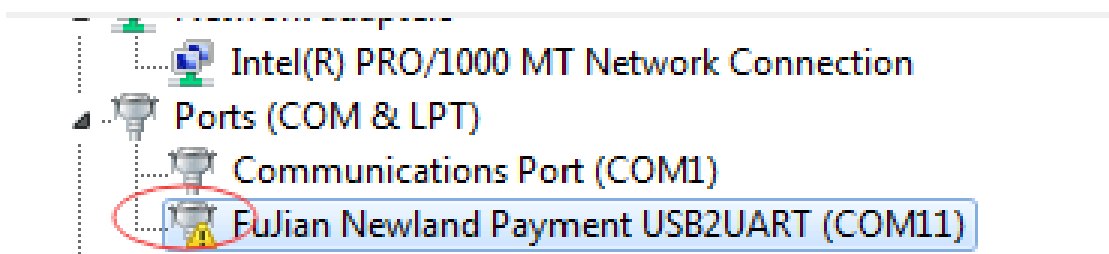
If you turn off the driver of the operating system to force digital signatures, turn it on

win7*64 System

If the "Service Pack 1" is not installed, the following prompts will often appear at the end of the installation driver.



To the device manager to see, the driver has a yellow exclamation mark



Click on "Computer", click the right mouse button, click "properties", See if "Service Pack 1" is installed, as shown below.

View basic information about your computer

Windows edition

Windows 7 Enterprise

Copyright © 2009 Microsoft Corporation. All rights reserved.

Service Pack 1



The "Service Pack 1" interface is not installed as shown below

View basic information about your computer

Windows edition

Windows 7 Enterprise

Copyright © 2009 Microsoft Corporation. All rights reserved.

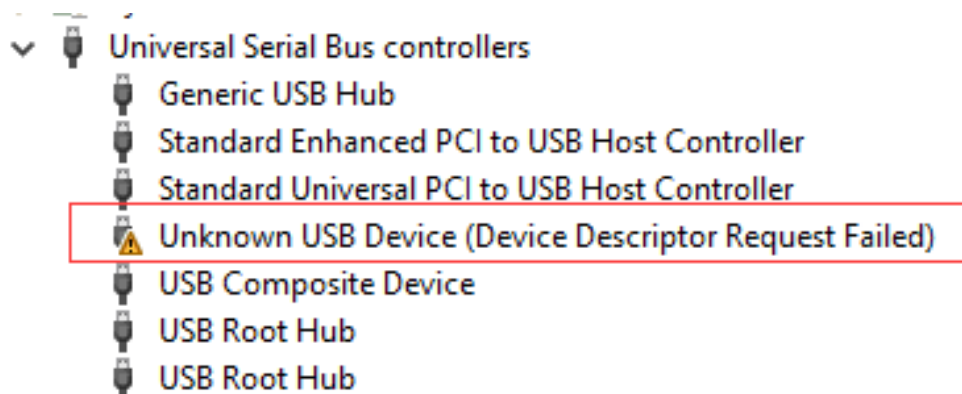


Install the official "Service Pack 1" first.

If "Service Pack 1" is installed, the device manager still has a yellow exclamation point. Install the system security patch Windows6.1-KB3033929-x64.msu in the driver installation directory. If the system patch fails to be installed, the system usually lacks the dependency of the patch. It is recommended to use "Windows update" update system patch.

Unidentified device

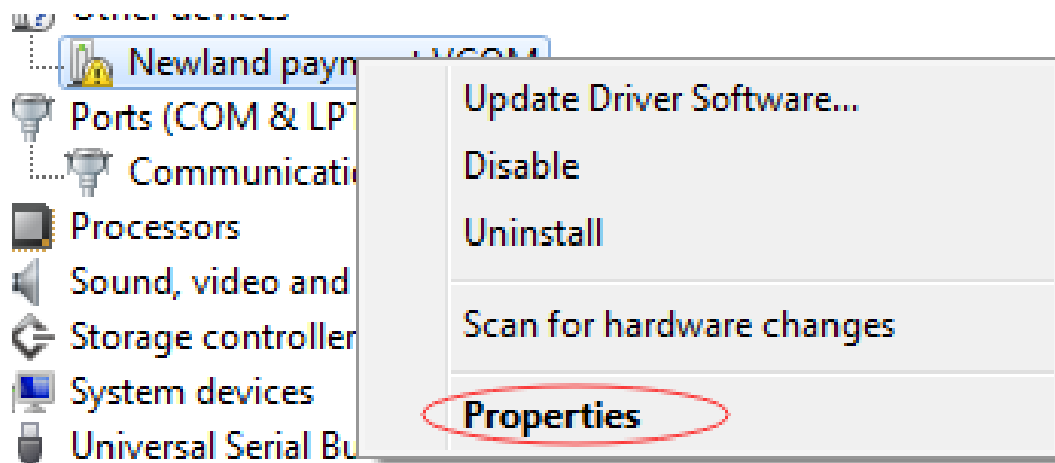
If the device manager displays a message similar to the following, it indicates that the POS fails to interact with the Windows system, try to change the mini usb line, or replace the host USB port. If the problem persists, change the host.



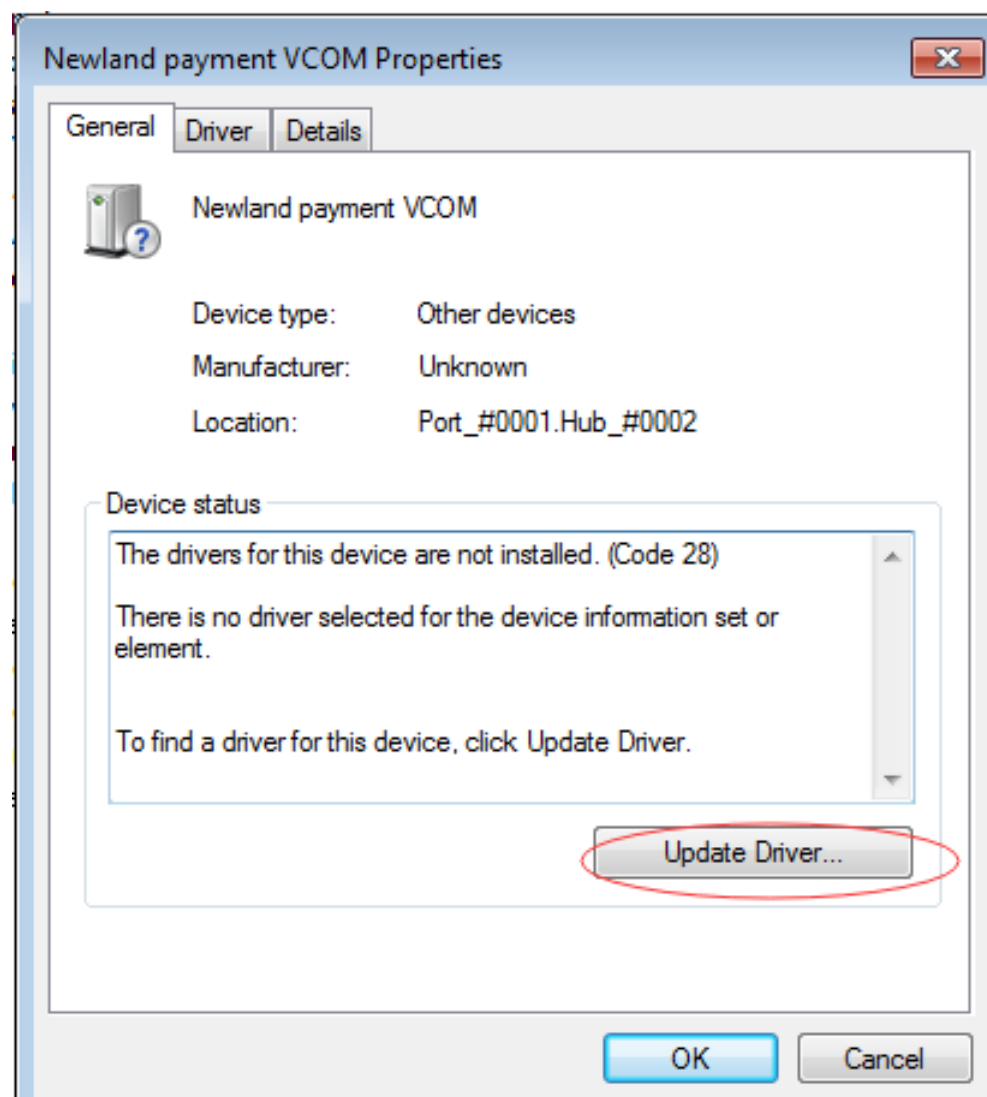
Manually update the driver

For the case where the device manager has a yellow exclamation point, you can try to manually update the driver as follows:

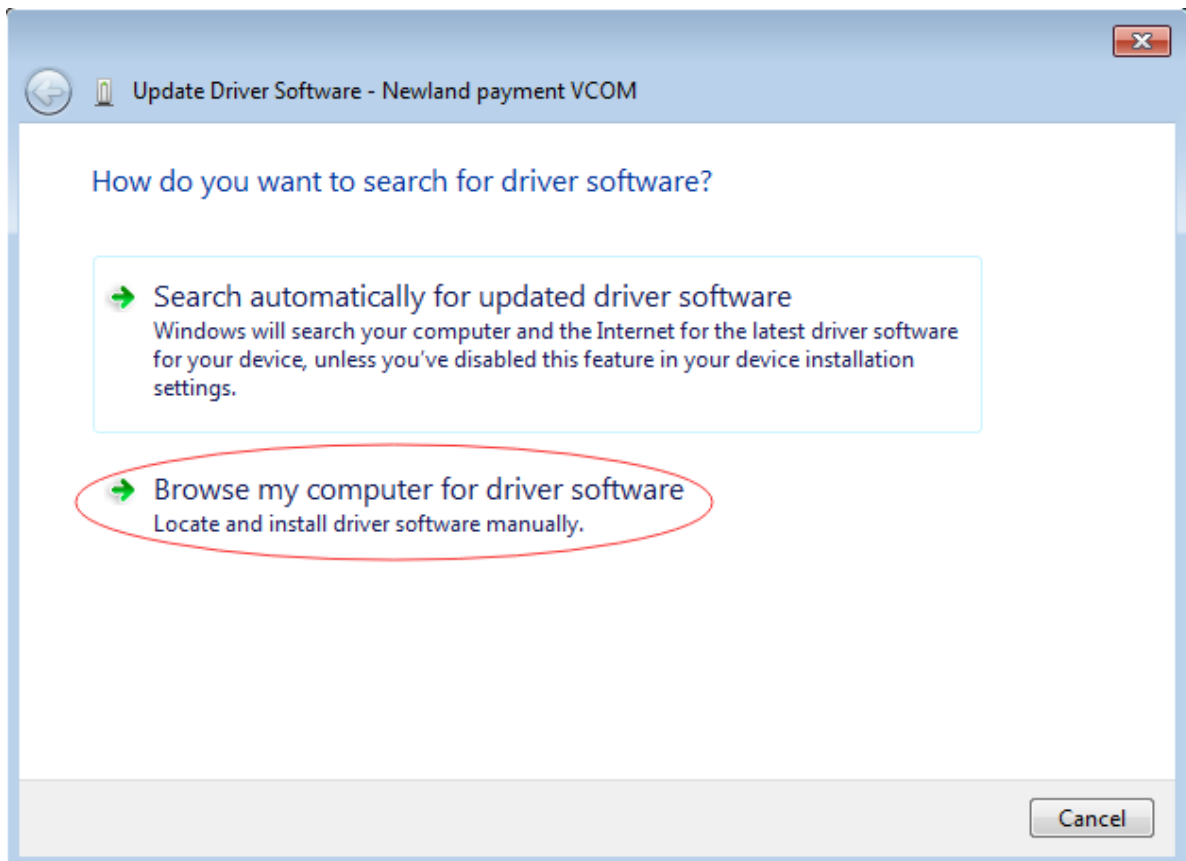
Step 1: Go to the device manager, find the driver, right click, click on "Properties"



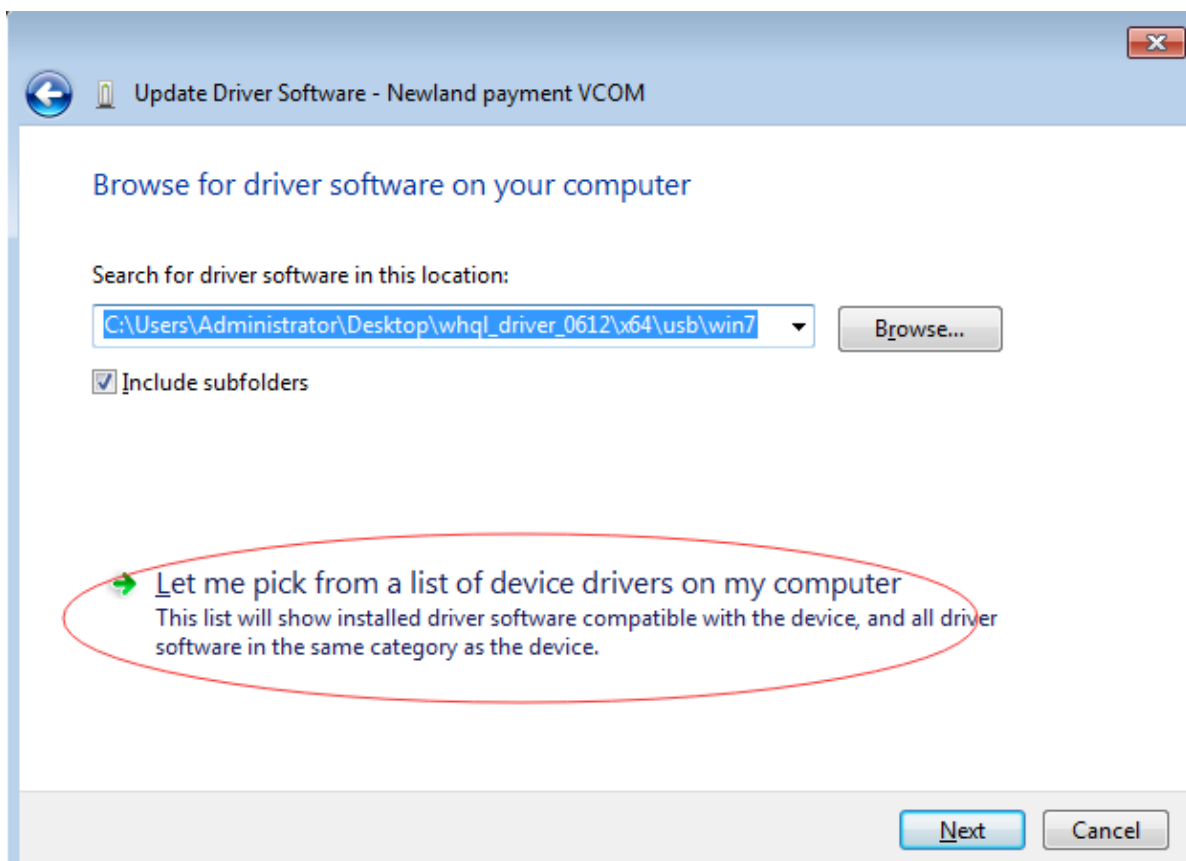
Step 2: Click "Update driver"



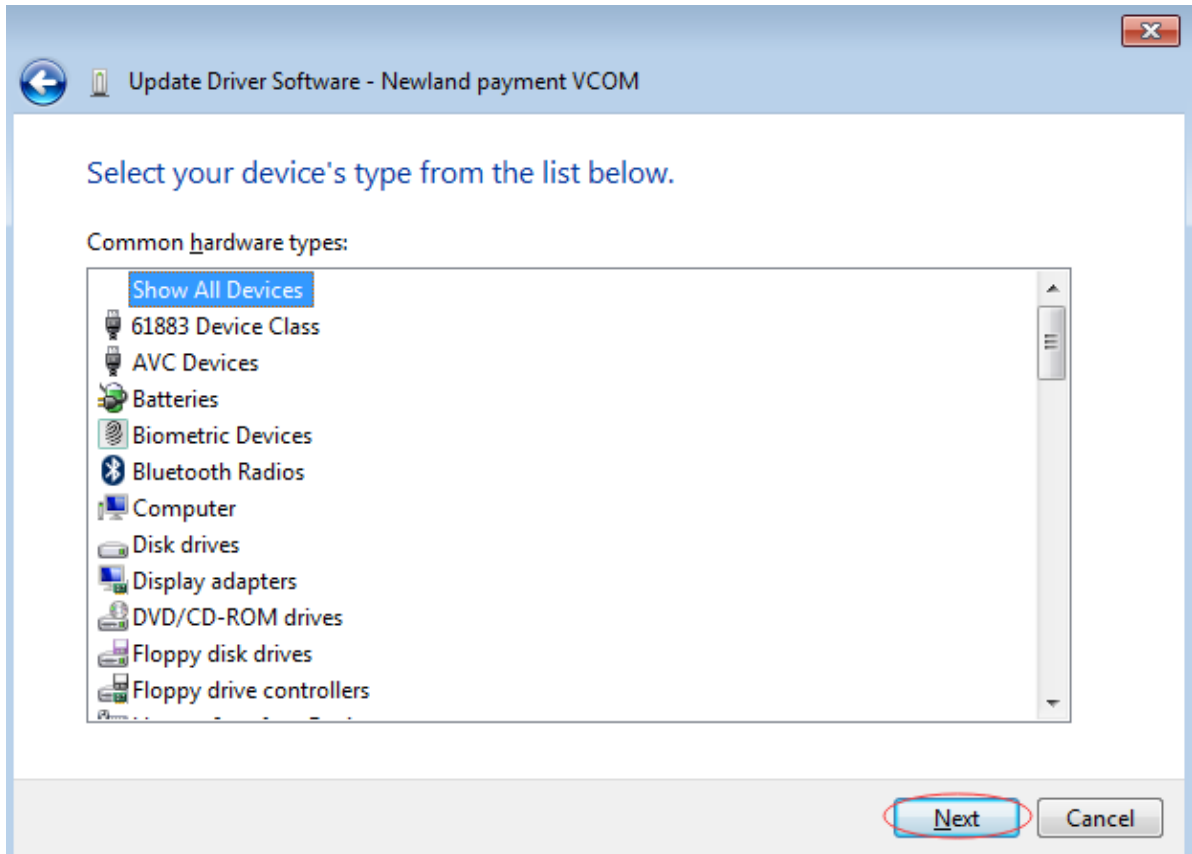
Step 3: Click "Browse my computer for driver software"



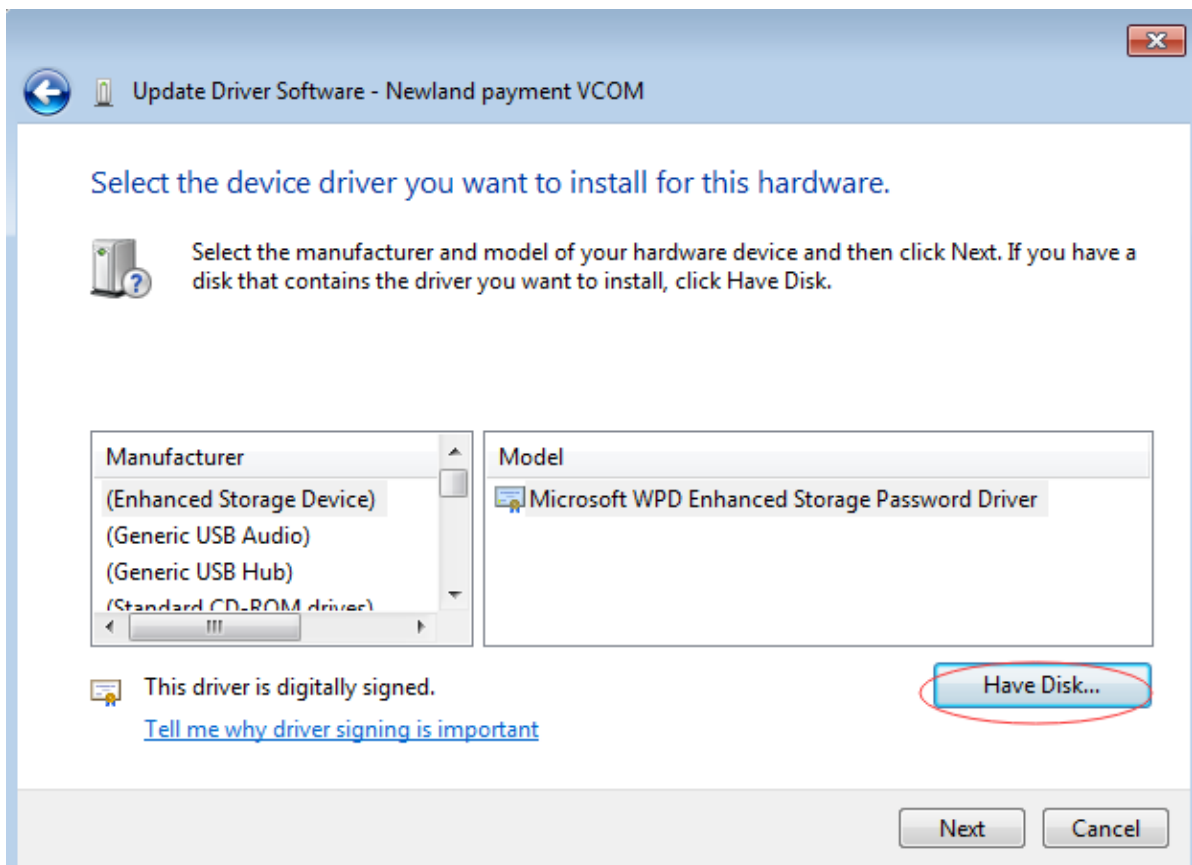
Step 4: Click "Let me pick"



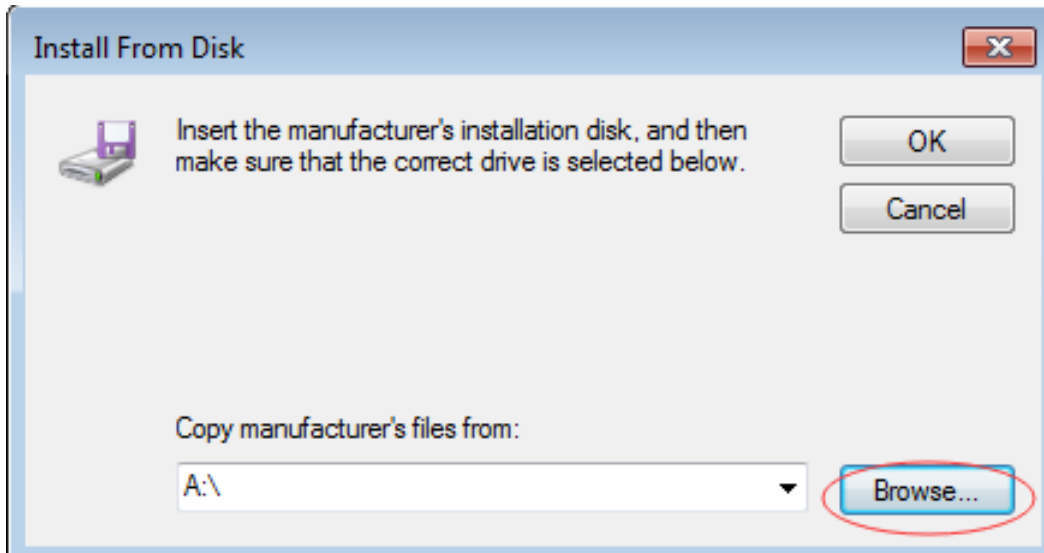
Step 5: Click "Next"



Step 6: Click "Have Disk..."



Step 7: Click "Browse..." to select the driver you want to install In the driver installation directory



In the installation directory, find the usb3 \ x64 \ x86 directory according to your operating system.

usb3	2023/5/29 13:43	文件夹
x64	2023/5/29 13:41	文件夹
x86	2023/5/29 13:41	文件夹

The "usb3" directory is for installing usb3.0 devices. The devices that support usb3.0 are N950U and N750. If you need to manually update driver, please select the usb3 directory to install the "qcser.inf" driver file.

名称	修改日期	类型	大小
qdss	2023/5/29 13:43	文件夹	
serial	2023/5/29 13:43	文件夹	
qcmdm.inf	2023/5/26 12:42	安装信息	9 KB
qcser.cat	2023/5/26 12:42	安全目录	16 KB
qcser.inf	2023/5/26 12:42	安装信息	5 KB

In the "x86" and "x64" file directories, you can see the following directory structure

adb	2023/5/29 13:41	文件夹
mdm	2023/5/29 13:41	文件夹
qcusber	2023/5/29 13:41	文件夹
usb	2023/5/29 13:41	文件夹




The driver directory description is as follows:

adb:	adb driver	Corresponding to SP930/N910
mdm :	modem driver	Corresponding to SP930/N910
qcusber:	Virtual COM	Corresponding to SP930/N910
usb:	Virtual COM	Corresponding to SP600/SP50/SP60/SP630/SP830

There is a "*.inf" file under each directory file, which corresponds to the manually installed driver file. You only need to enter the corresponding "x86" or "x64" directory to select according to the cpu type of the installed computer.

名称	修改日期	类型	大小
 qcser.inf	2023/5/26 12:41	安装信息	61 KB
 qcusbsr.cat	2023/5/26 12:41	安全目录	34 KB
 qcusbsr.sys	2023/5/26 12:41	系统文件	165 KB

What's more special is that there are two directories of "win 7" and "win 10" under the usb directory. If you need to install manually, if your computer is win 7, then select the driver under the corresponding "win 7" directory. If your computer is win 8/win 10/win 11, choose the driver under the "win 10" directory.

<<  > x64 > usb >			
名称	修改日期	类型	大小
 win7	2023/5/29 13:41	文件夹	
 win10	2023/5/29 13:41	文件夹	